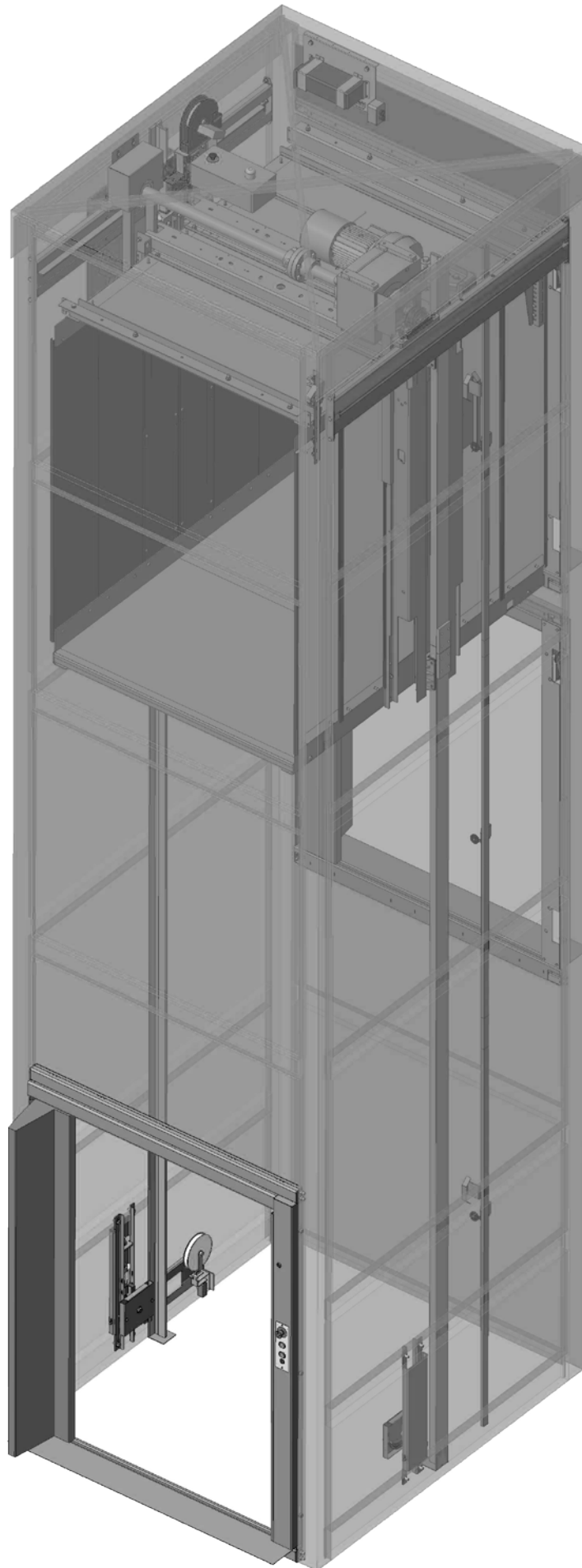




Rhino.LIFT

Rhino Lift

Rhino Lift Pro



Rhino.LIFT

- Goods-only lift.
- Chain drive.
- Self supporting structure.
- Modular design.
- Rated loads from 500 to 2000kg.
- Speed 0.15m/s.
- Single or through openings.
- 100mm pit.
- Energy efficient VVVF controlled.
- 800X600X260mm control cabinet to be installed above or below.
- Maximum travel of 9m.
- No extra civil works required.
- Fast installation with installation kits available.
- No machine room.
- Different car options.
 - Bump rails.
 - Heavy duty flooring,
 - Fluorescent or LED lighting.
- Manual swing landing doors or shutter gates.
- Car doors available.
- Lift Directive 2006/42/EC.

RhinoPro.LIFT

- Goods-lift with attendant
 - Standard Rhino lift with additional features for attendant control
 - Key switch to turn to "attendant control".
 - Full height safety edge. Vandal resistant Cat 2.
-

Technical features Rhino

Drive unit type	Geared traction machine, VVVF speed regulator, chain drive
Rated Speed	0.15m/s
Rated Load	500, 1000, 1500 or 2000kg
Entrance configuration	Single or open through at 180°
Power supply	3-phase 380-400-415 Vac
Installation	Freestanding modular structure finished in primed steel RAL 9005 Black. Anchoring the structure to each floor is recommended.
Height of structure	Max. 12m
Travel	Max. 9m
Number of levels	Max. 4 levels
Guide length	5m
Min. headroom	Lift car internal height + 700mm
Min. structure headroom	Lift car internal height + 600mm
Pit	100mm
Lift car internal height	1800, 1900, 2000 (standard), 2100, 2200mm
Lift car width	From 1000mm to 2000mm in 100mm increments
Lift car depth	From 1000mm to 2000mm in 100mm increments
Min. lift shaft width	Lift car width + 470mm
Min. lift shaft depth	Lift car depth + 180mm
Min. distance between floors	Car height + 350mm for entrances on the same side. 350mm for opposite side (180°) entrances
Lift car	<ul style="list-style-type: none"> • Built in steel plate, finished in RAL 7032 Beige. • Floor finish in steel plate, coated in RAL 7032 Beige • Direct fluorescent lighting • Other finishes available upon request.
Landing doors	Manual swing with vision panel finished in epoxy painted steel, RAL 9005 Black. UNE EN 81-58:2004 E120
Lift car door	No car door is included as standard but is recommended
Traction	Gearbox with 1 brake
Control system	APB call and send lift control system from landings
Landing operating panel	<ul style="list-style-type: none"> • Push buttons with led • Emergency stop push button
Shaft lighting	Direct fluorescent lighting

Technical features Rhino Pro

Min. headroom

- Lift car internal height + 700mm for 500 and 1000kg loads
- Lift car internal height + 750mm for 1500 and 2000kg loads

Lift Car

- Galvanised car ceiling
- Handrail
- COP including floor push buttons, attendant key switch, alarm button, stop switch. EN81-70 features.
- Performance Level C light curtain system, Vandal Resistant Cat 2.

Traction

Gearbox with 2 brakes

Control System

APB call and send on landings and constant pressure lift control in car

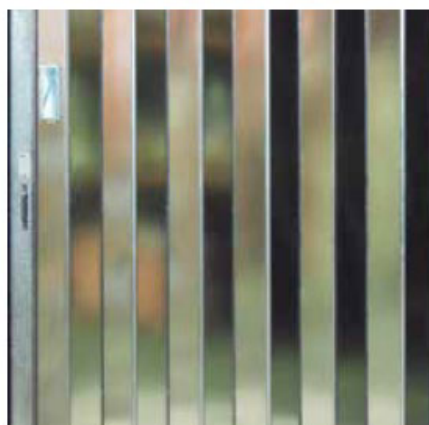
UCM

Unintended car movement system is included as standard

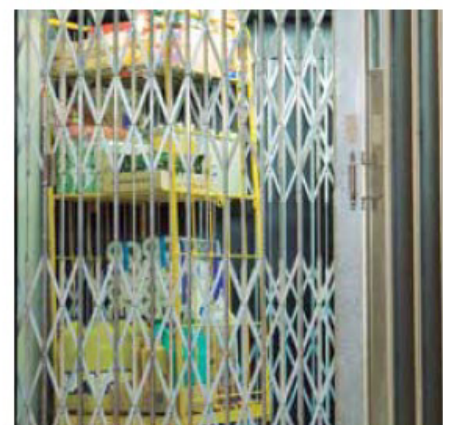
Doors



Manual swing landing door (standard)



Galvanised manual shutter landing gate



Galvanised car picket gate

Extras Rhino and Rhino Pro

Access Ramp

If no pit is available, we can supply primed steel RAL7032 or aluminium chequer plate finished ramps.

Guide rails

2.5m

Landing doors

- Manual folding shutter gates with galvanised finish and 2 hour fire resistance.
- Manual single or double swing door, with small vision panel, finished in AISI314 st. steel, E120.
- Manual single or double swing door, with small vision panel, finished in AISI316 st. steel, E120.

Car doors

Manual picket gates, with or without electrical interlock.

Car roof

Galvanised metal sheet.

Car lighting

LED tube lighting.

Car floor

- Black rubber circles Ref. FL01
- Aluminium chequer plate Ref. FL05
- Steel chequer plate Ref. FL14

Bump rails

Wood, stainless steel or PVC.

Push buttons

DMG or Dewhurst, standard pushes or key switches.

Machine lifting kits

- Kit A: If space above steel tower is > 500mm
- Kit B: If space above steel tower is < 500mm and car depth is <= 1.550 mm
- Kit C: If space above steel tower is < 500mm and car depth is >= 1.550 mm

Other Extras

- Unintended car movement system (always included for Rhino Pro)
 - Out-of-service key switch
 - Ladder with supports to access the rescue hatch and locks
 - Structure Installation platforms
-

Extras Rhino Pro

Autodialler

- In car operating panel
- Inductive loop
- Telephone module located underneath car
- GSM

Firemen operation function

When it's switched on and all doors are closed, the lift will go to the evacuation floor

Building Management System with alarm push button and position

Voltage free contacts

Alarm push button

- Pit
- On the car top

Car indicator

- LCD 3"
- LCD 5"
- TFT 7"

COP engraving

- Logo
- Lift reference plate/CE mark
- Autodialler instructions

Car operating panel

- BCA1: 150mm (w) x 585mm (h) x 2mm (d)
- BCA2: 175mm (w) x 585mm (h) x 780mm (d)

Landing operating panel

- Logo engraving
- 3" LCD vertical display
- Keypad
- LOP buzzer

Other extras

- Car light timer
- Intercom between car operating panel and control panel
- 3hr emergency car light
- Voice synthesiser



BCA1

BCA2

LIFT CAR				Door Height	Structure Width	Shaft Width
Width	Clear opening		Manual folding picket gate			
	No Car Door					
	Shutter Gate	Swing Door				
1000	805	900	805	Car Height	1404	1470
1100	905	1000	890		1504	1570
1200	1005	1100	970		1604	1670
1300	1105	1200	1070		1704	1770
1400	1205	1300	1155		1804	1870
1500	1275	1400	1235		1904	1970
1600	1375	1500	1335		2004	2070
1700	1475	1600	1420		2104	2170
1800	1575	1700	1500		2204	2270
1900	1650	1800	1600		2304	2370
2000	1750	1900	1685		2404	2470

LIFT CAR					Structure Depth	Shaft Depth
Depth	Clear Car Depth					
	Single Entrance		Through Car			
	Picket Gate	No Car Door	Picket Gate	No Car Door		
1000	850	950	800	1000	1120	1180
1100	950	1050	900	1100	1220	1280
1200	1050	1150	1000	1200	1320	1380
1300	1150	1250	1100	1300	1420	1480
1400	1250	1350	1200	1400	1520	1580
1500	1350	1450	1300	1500	1620	1680
1600	1450	1550	1400	1600	1720	1780
1700	1550	1650	1500	1700	1820	1880
1800	1650	1750	1600	1800	1920	1980
1900	1750	1850	1700	1900	2020	2080
2000	1850	1950	1800	2000	2120	2180

NB:
 Within each load-bearing category, the cited widths and depths can be combined with one another, as required.
 For sites that have the structure installed within an enclosed shaft, please allow for a 600mm clearance above the entrance at the top floor, to allow access to a maintenance trap door. On all other floors the structural opening is car height + 180mm.
 Unless stated otherwise, all dimensions are expressed in millimetres.

